



## Flail Mower RBRM115/130/155

Microtracteur 25 – 60 HP  
With power grip 540 tr/min

**Intense Crushing**  
**25 - 60 HP**

Working width 115, 130 or 155 cm

3 point linkage cat.1

Delivered with cardan shaft

3 positions offset, **0 – 5 - 10 cm**

Y-knives width 40 mm thickness 5 mm

Cutting height adjustable from -1.5 to 11cm depending on knife type (Y, hammers, paddles or scarificator)

### The advantages:

**Helical steel gearbox with free wheel:** *Transmission of efforts without noise or vibration*

**Substantial fuel savings due to the rotor design**

**Rotor with helical position:** *even drive effort for optimal crush big rotor tube : cutting rigidity and inertia, electronic balancing after assembly of knives. Reduced energy consumption and CO2-emission*

**High rotation speed:** *rotation 2500 tr/min, cutting speed of 42m/s for a perfect cut and crush*

**System to avoid gras jam:** *no risque of gras winding around the roll*

**Curved chassis:** *the chassis form and the particular disposition of the back roll potimize the ventilation, ejection and self-cleaning of the roll. Armoured sheet thickness 3 mm on model 155*

**Back roll:** *especially conceived to resist lateral moves and to protect from projections*

**Large opening:** *allows to swallow the vegetation without flatten*

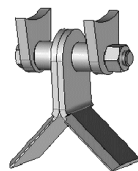
**Drive:** 3 trapezoidal belts, adjustable tension can be controlled easily

**Security, ergonomic:** lateral deflectors adjustable, front flaps anti-projection, lifting eye in the centre of gravity for handling

Lubrication accessible without disassembly

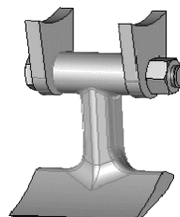
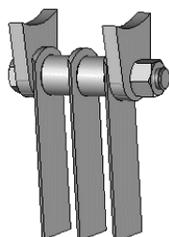
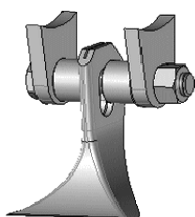
|         | (CV)  | Number of tools |                    |                        | Overall dimensions<br>L x l x h (cm) | Weight (kg) |
|---------|-------|-----------------|--------------------|------------------------|--------------------------------------|-------------|
|         |       | "Y"             | Paddles<br>Hammers | Scarificator<br>Knives |                                      |             |
| RBRM115 | 25/50 | 40              | 20                 | 60                     | 85 x 132 x 76                        | 175         |
| RBRM130 | 25/60 | 44              | 22                 | 66                     | 85 x 147 x 76                        | 185         |
| RBRM155 | 30/60 | 52              | 26                 | 78                     | 85x172x76                            | 205         |

Serial assembly with Y-knives



Options :

Assembly with paddles, scarificator knives or hammers



Bases

